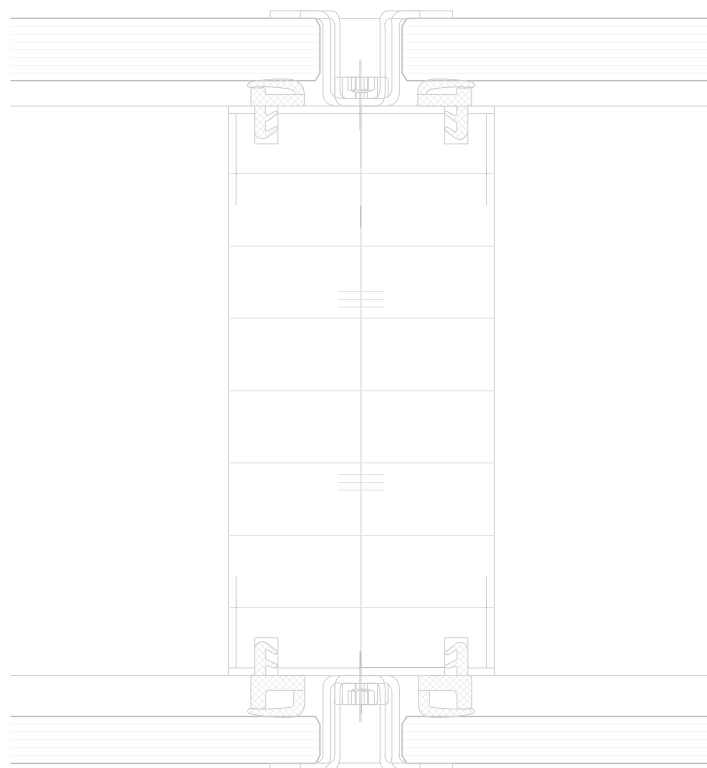


# Partition System T



# System T

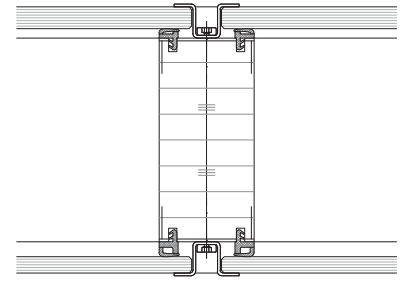
Post-and-beam wall system  
Wall thickness 100 mm

The partition wall System T with its wooden beam and post design creates a warm atmosphere within the room. The clean and minimalist design creates its visual effect from the relationship between wooden surfaces and flush glazing. The system offers a friendly and intelligent alternative to steel and aluminium structures.

System T is a relocatable partition wall system of beam and post design with a substructure of veneered plywood posts. The glass surfaces are fitted flush to the surface of the substructure using brushed stainless steel fixings. Timber as carbon-neutral material emphasises a sustainable architecture.



Double glazing



## Design

Post-and-beam wall system, flush glazing system

## Finish

Double glazing 6-8 mm toughened safety / laminated glass

## Element types

Solid, balustrade, clerestory, fully-glazed

## Surface

Posts veneered or coated

## Wall thickness

100 mm

## Section dimensions glass wall

35 mm

## Sound insulation

up to Rwp 44 dB

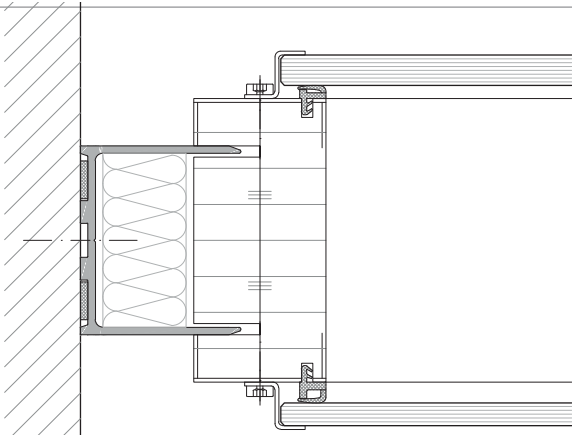
## Doors

Hinge door with timber or aluminium door frames  
sliding doors (ceiling and bottom controlled)

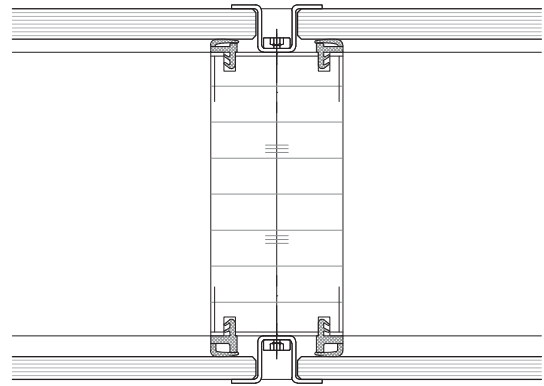
## Special elements

Acoustic absorption elements, blinds,  
climate control elements

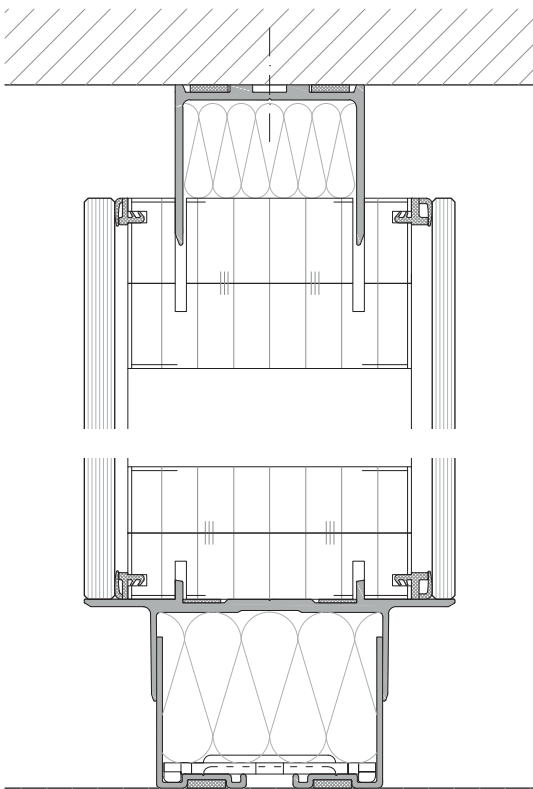




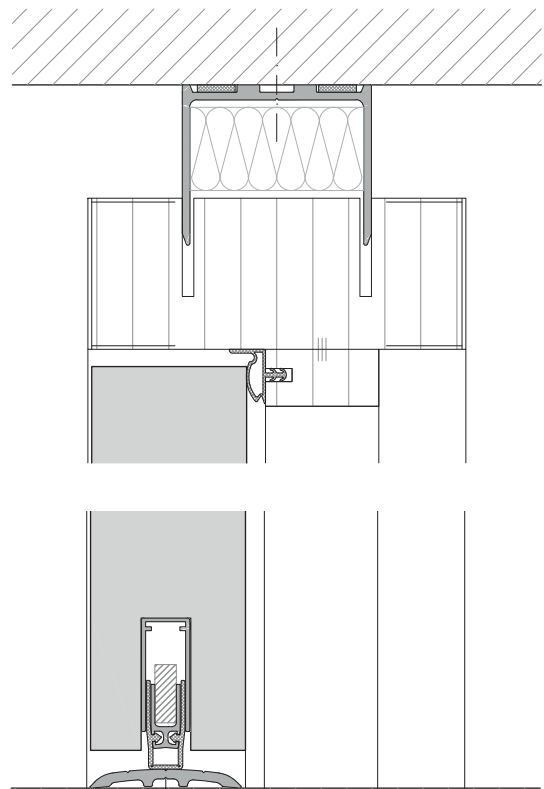
Glass element Wall connection



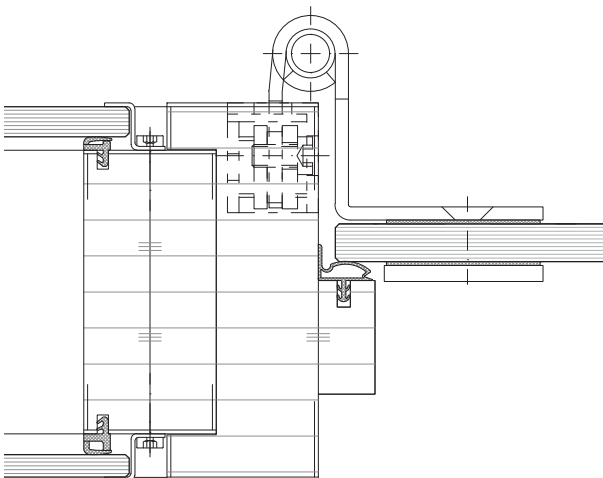
Glass element Modular grid joint



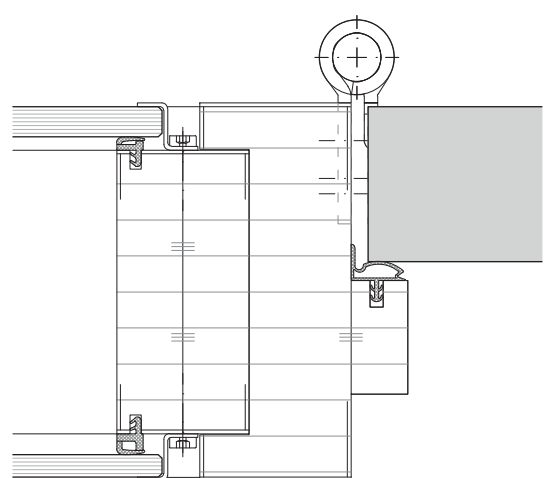
Glass element Floor- and ceiling connection



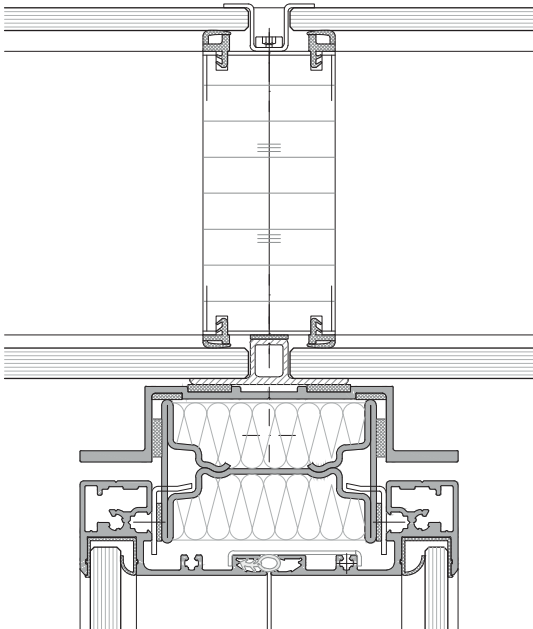
Door element Floor- and ceiling connection



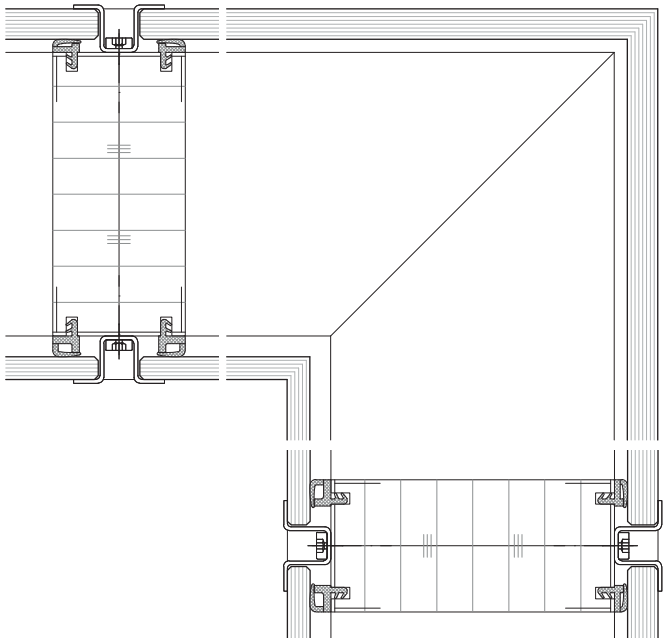
Fully-glazed door 10 mm



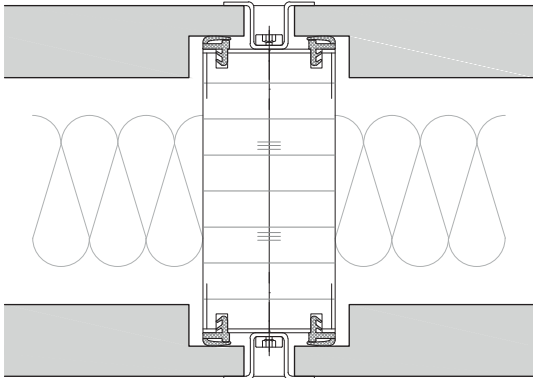
Solid door leaf 41 mm



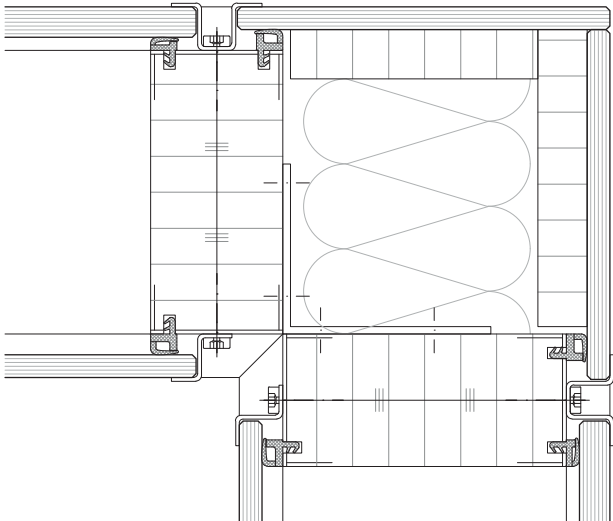
Glass element T-junction with System 2000



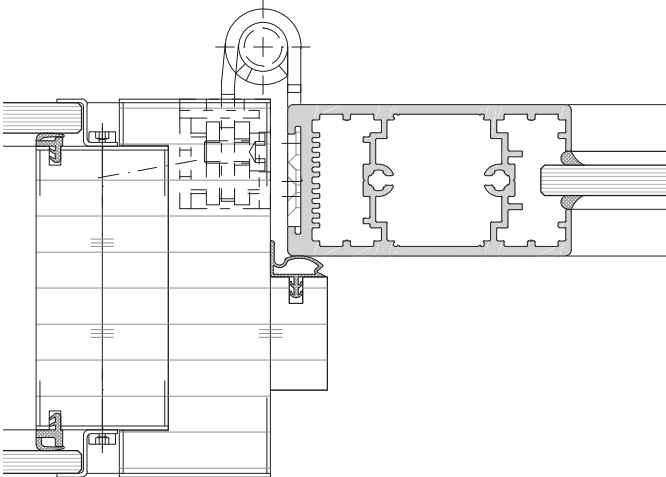
90 ° Corner element glazed (mitre)



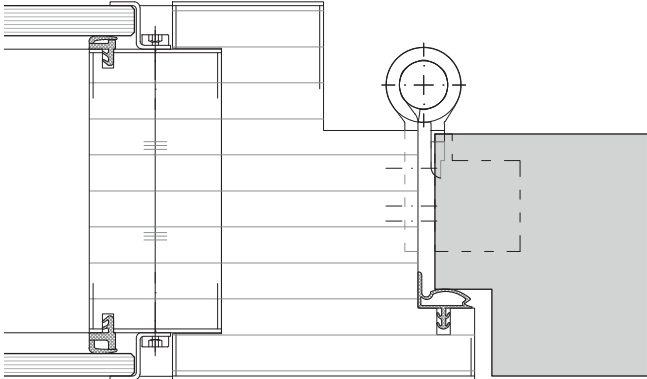
Solid wall Modular grid joint



90 ° Corner element Timber with glass planked



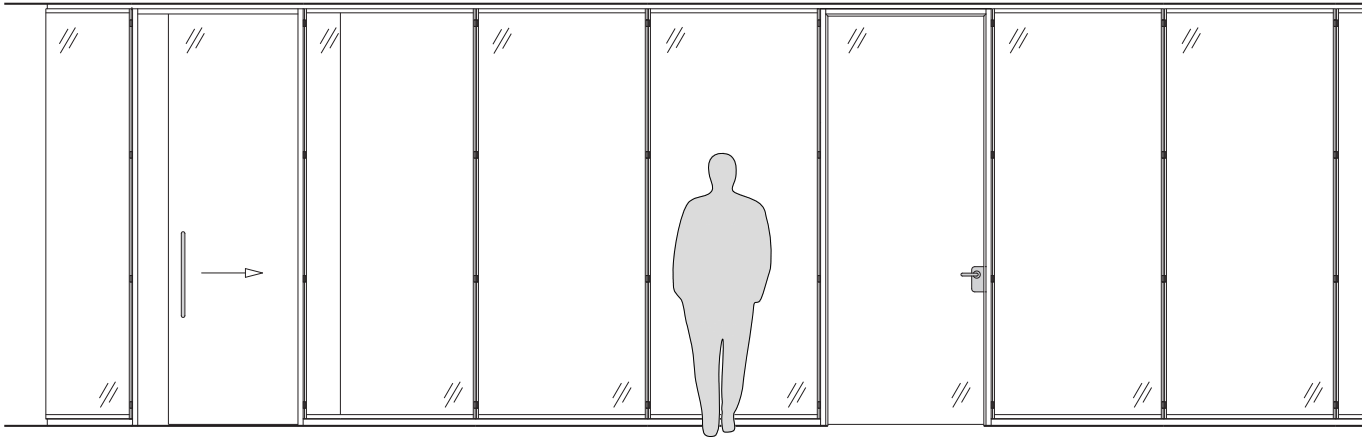
Structural glazing door 64 mm



Solid door leaf 64 mm



## Corridor wall with sliding door or hinged door



<b>Partion wall</b>	
<b>Wall thickness</b>	100 mm
<b>Widths</b>	Flexible grid with 3000 mm height and maximum grid width
<b>Heights</b>	Flexible grid, depending on installation grid, standard grid up to approx. 3000 mm
<b>Substructure</b>	Posts of multiply wood material with only 35 mm visible width Cross-section vertical 35 x 75 mm / horizontal 40 x 75 mm
<b>Substructure Connecting sections</b>	Aluminium connecting sections anodized E6EV1 or powder coated to RAL colour
<b>Deflection</b>	+/- 8 mm in hight and width
<b>Surfaces</b>	Veneered or laquered finish to choice
<b>Glazing</b>	Double glazing with toughened or laminated safety glass
<b>Door frames</b>	- Wood surrounding frames with 40 mm or 80 mm visible section width - Aluminium frame as filigree frame with 35 mm visible section width
<b>Fittings</b>	3D adjustable stainless steel door hinges Door handle as per collection, stainless steel, office use
<b>Door leaves Hinged doors</b>	- VT 41 Solid timber door leaf 41 mm - VT 64 Solid timber door leaf 64 mm - GG 10 mm fully-glazed door - AR 40 aluminium framed door - AR 64 aluminium framed door
<b>Sliding doors</b>	- ST 10-B glass sliding door 10 mm toughened safety glass, floor-guided with stainless steel roller fitting - ST 10-D glass sliding door 10 mm toughened safety glass, suspended version with sliding door fitting attached to ceiling
<b>Fire rating</b>	Fire-rating not available

Element type	Construction / Description	Sound insulation in $R_{w,p}$ in dB
<b>Glass elements double-glazed</b>	6 mm toughened safety glass / 8 mm toughened safety glass	41 dB
	6 mm toughened safety glass / 8mm laminated safety glass SI (0,5)	44 dB
	Special elements with a higher insulation value on request	
<b>Door elements</b>	VT 41 solid door leaf 41 mm	32, 37 dB
	VT 64 solid door leaf 64 mm	37 dB
	GG 10 fully-glazed door 10 mm toughened safety glass	32 dB
	AR 40 aluminium framed door 40 mm	32 dB (8 mm toughened safety glass) 37 dB (12 mm laminated safety glass)
	AR 64 aluminium framed door 64 mm with 38 mm insulating glazing	37 dB



Strähle Raum-Systeme GmbH  
[www.straehle.de](http://www.straehle.de)  
[info@straehle.de](mailto:info@straehle.de)

Gewerbestraße 6  
71332 Waiblingen  
T +49 7151 1714-0  
F +49 7151 1714-320

Wurzelweg 5  
14822 Borkheide  
T +49 33845 66-0  
F +49 33845 66-199

Austria  
Industriestraße 9  
2353 Guntramsdorf  
T +43 2236 23232-0

Switzerland  
Dellenbodenweg 1  
4452 Itingen  
T +41 61 463 1332  
F +41 61 463 1333

UNITED KINGDOM PARTNER  
Savile Row Projects Ltd  
108-114 Golden Lane  
EC1Y 0TG London  
M +44 (0) 7813 652015