

Partition System 3400

System 3400

Fully-glazed system
22 - 50 mm wall thickness

The System 3400 fully-glazed partition wall combines maximum transparency with cost efficiency. Its structure is formed by flexible aluminium floor and ceiling profiles which, can incorporate a wide range of glazing types. The glazed profiles are easy to install and allow for building tolerances. You can choose from a number of different sliding and hinged door elements made of glass or wood, with either aluminium or wooden block frames.

The System 3400 partition wall offers great variability while at the same time reducing the design to the essentials. It is fully compatible with other Strähle partition wall systems and suitable for corridors in which high transparency is required. Planners can vary the degree of transparency and the appearance of the glazing as desired by using adhesive films and decals. The System 3400 can equally be used to create highly sound-insulated glass fin connections on façades, also in conjunction with insulated glass. This makes the product particularly suitable for companies that wish to see their open working culture reflected in the structure of their rooms.

Design

Fully-glazed construction

Construction

Single glazed 10-24 mm toughened safety glass / acoustic laminated glass

Element types

Fully-glazed, floor to ceiling

Surfaces

Aluminium profiles in E6 EV1 or powder-coated

Wall thickness

22 - 50 mm

Glass joint

Cruciform dry joint, silicon seal or bonded

Sound insulation

Up to R_{wP} 41 dB

Doors

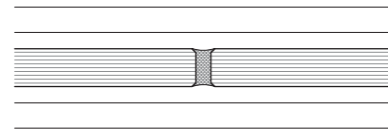
Fully-glazed doors, aluminium-framed doors, solid doors, sliding doors

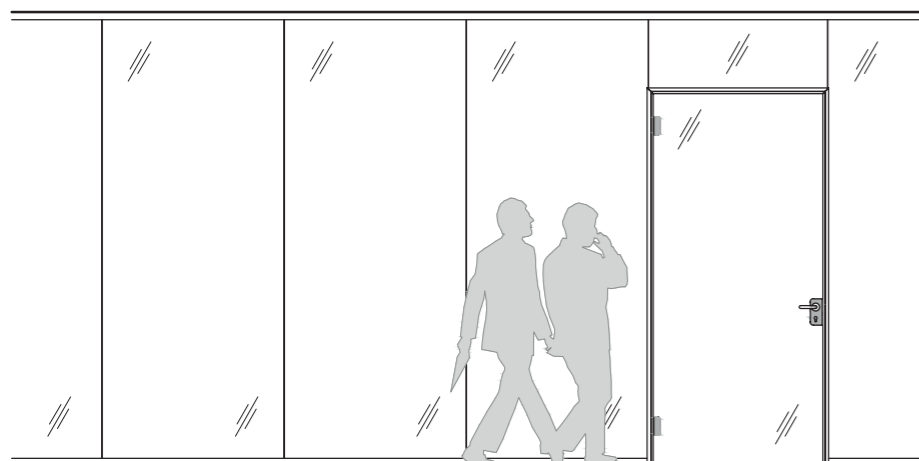
Accessories

Absorption elements (fitted as a shell in front of the glass)

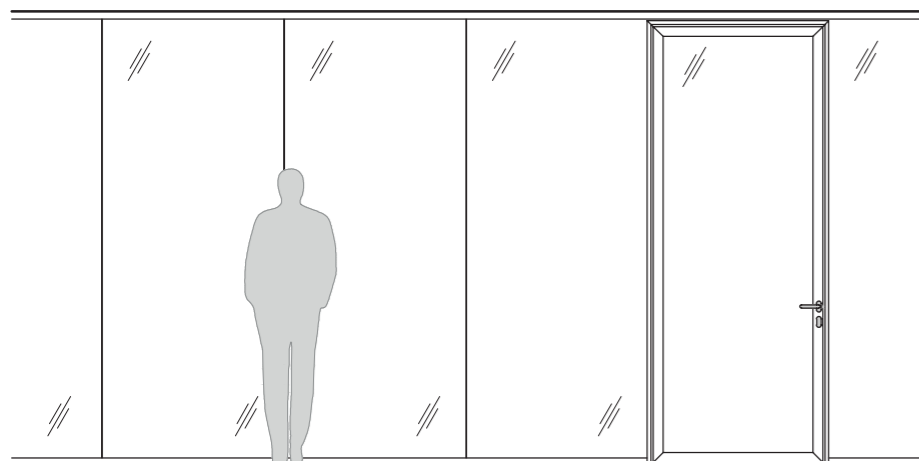


Fully-glazed

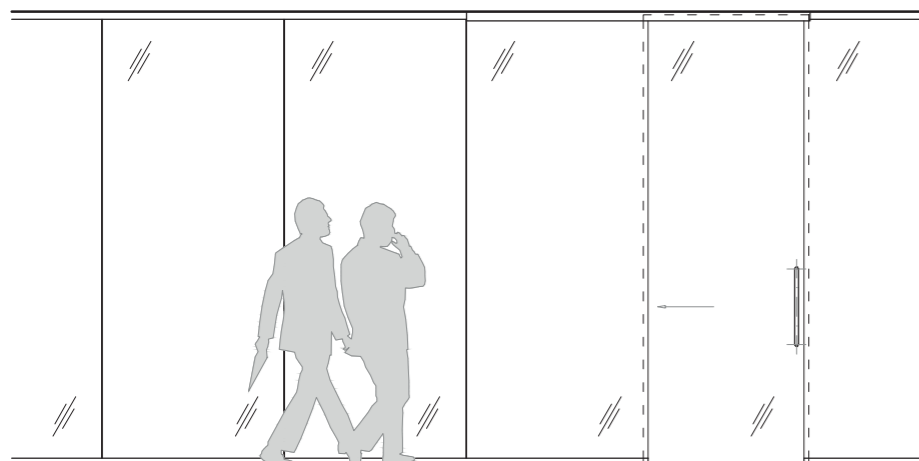




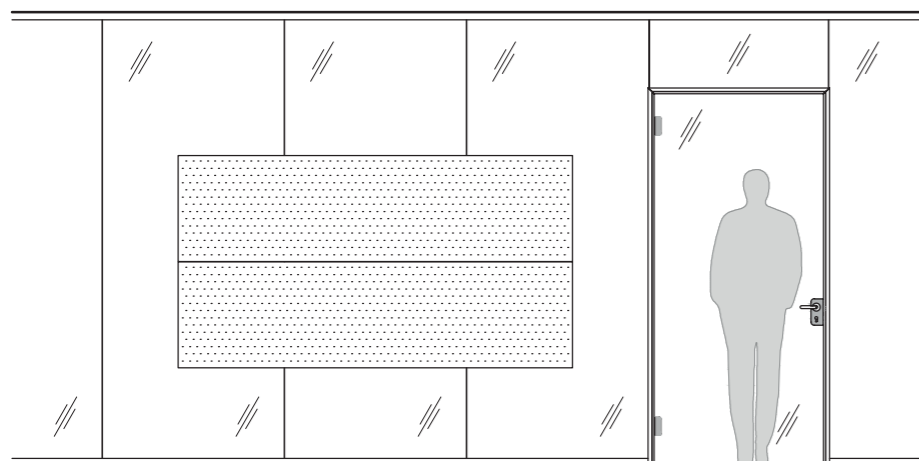
Corridor wall with all-glass door and toplight



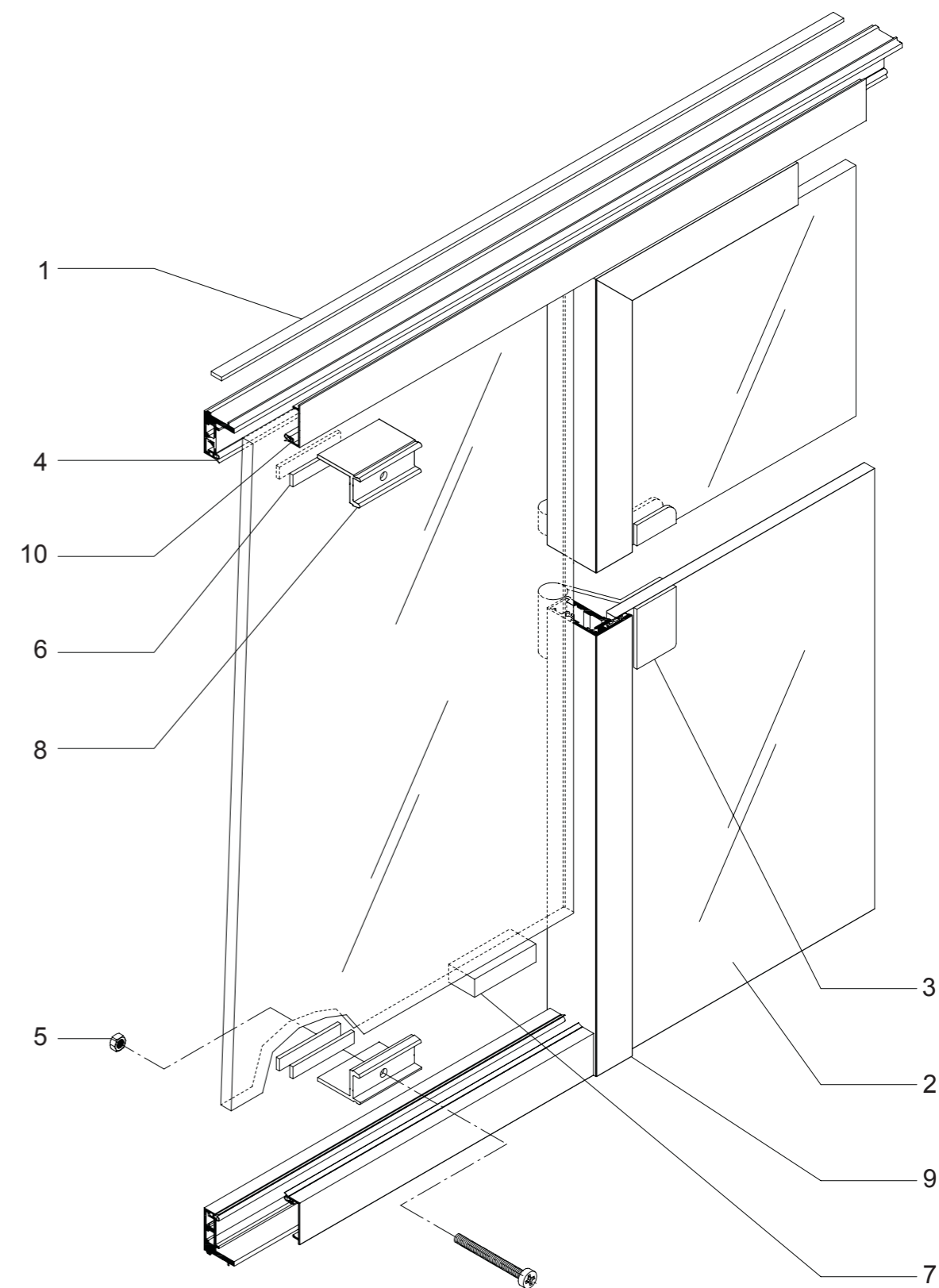
Corridor wall with ceiling-high fully-glazed door



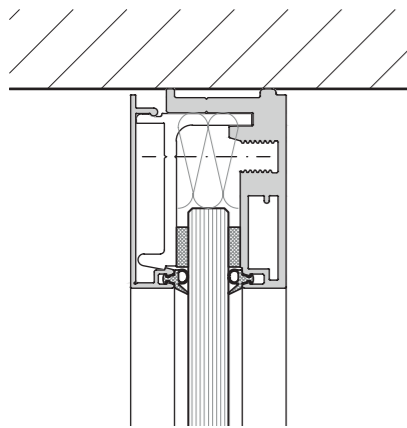
Corridor wall with all-glass sliding door



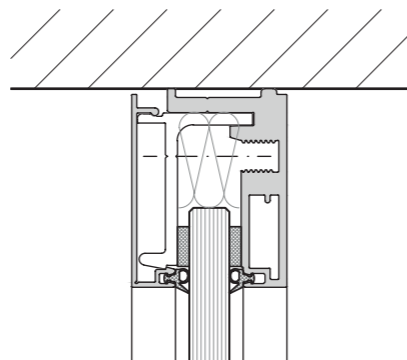
Glass wall with acoustic absorber



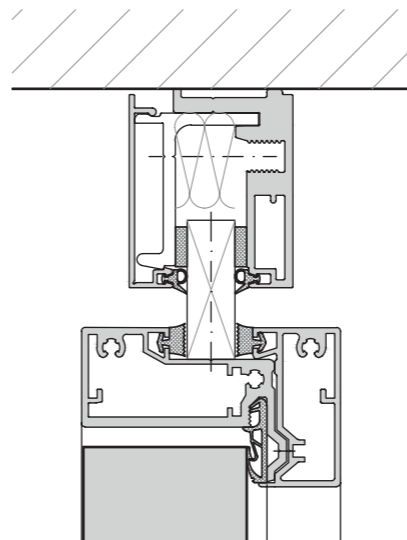
- | | | |
|----------------------------|--------------------|-------------------|
| 1 Acoustic Moltopren strip | 5 Nut | 9 Aluminium frame |
| 2 All-glass door panel | 6 Clamp support | 10 Glas strip |
| 3 All-glass door hinge | 7 Glass support | |
| 4 Glazing seal | 8 Clamping bracket | |



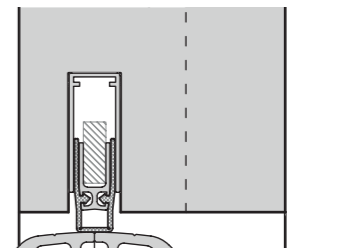
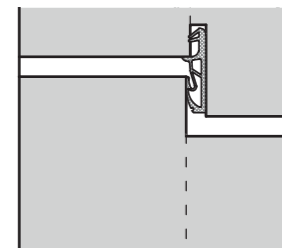
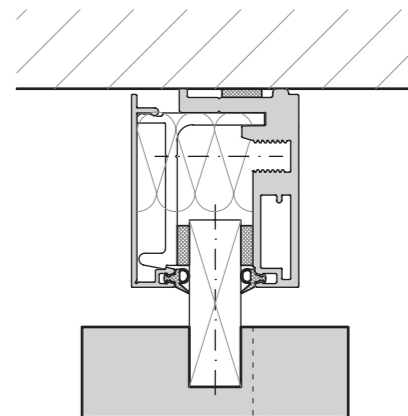
Glass wall ceiling connection



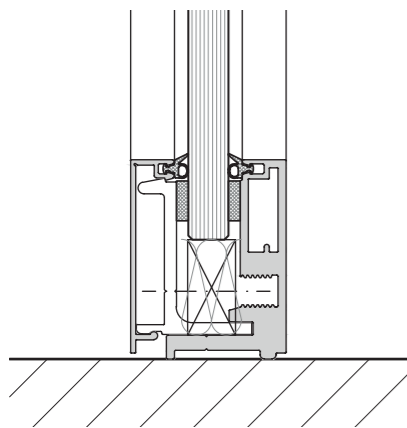
Sliding door fully-glazed ceiling connection



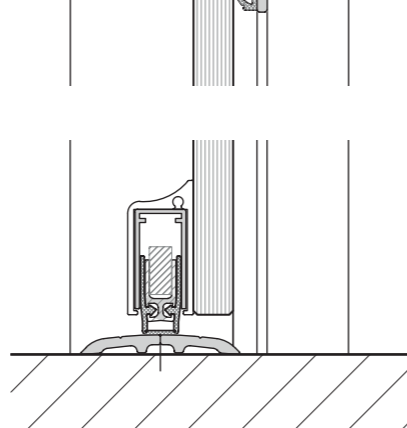
Solid wall ceiling connection



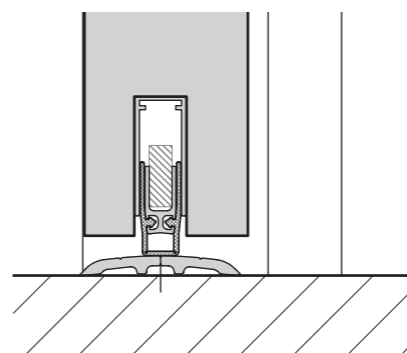
Solid wall 64 mm block frame



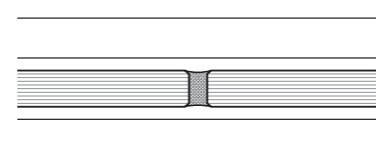
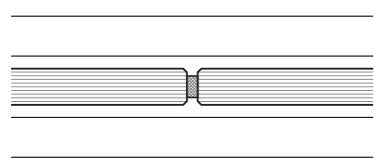
Glass wall floor connection



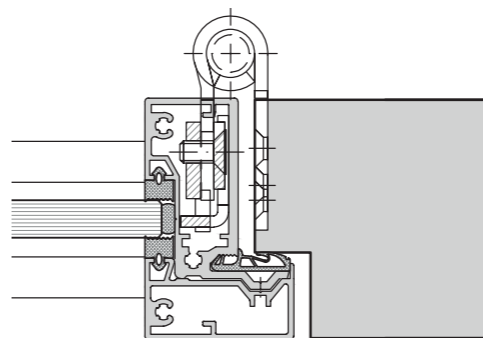
Sliding door fully-glazed floor connection



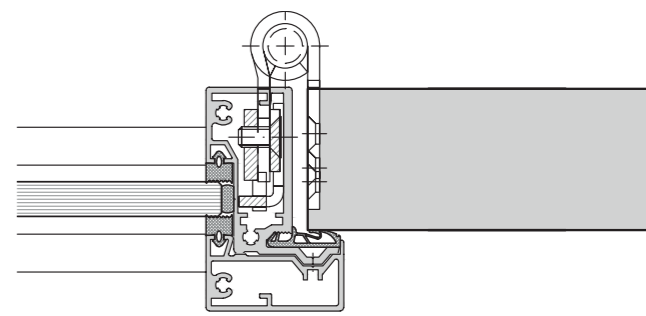
Solid wall floor connection



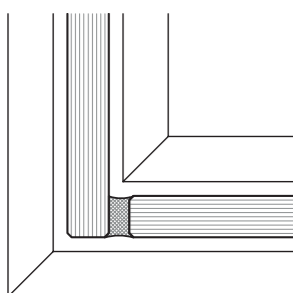
Glass wall abutment connection



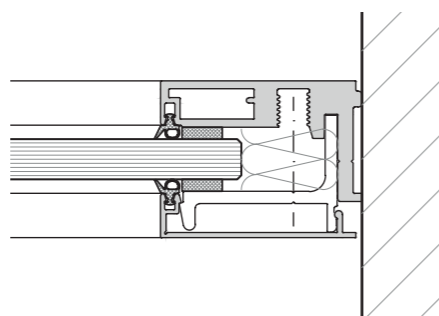
Solid wall 64 mm



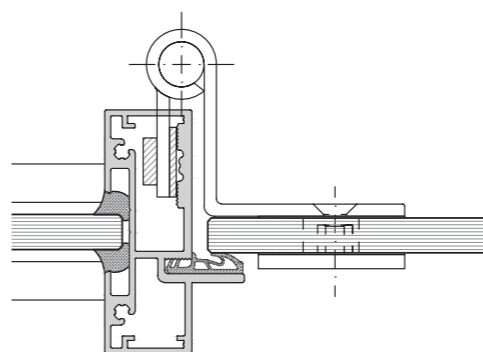
Solid wall 41 mm



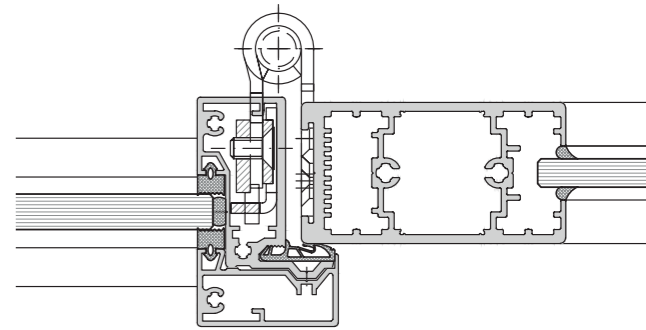
Glass wall 90° corner



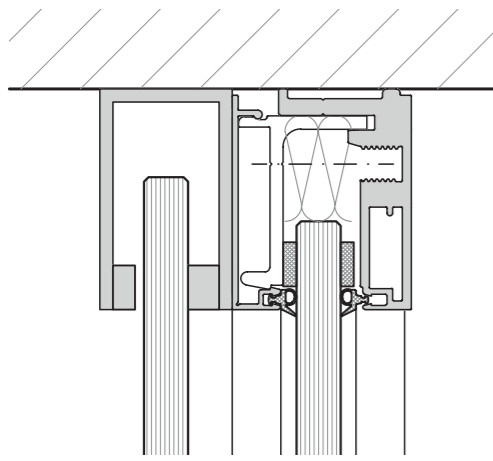
Glass wall modular grid joint



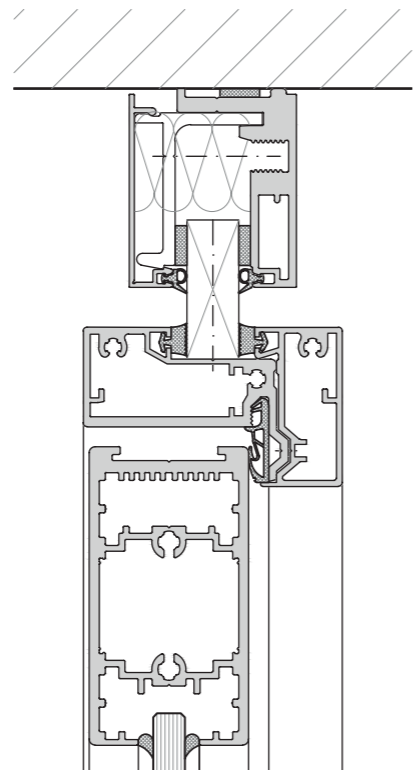
Door element fully-glazed



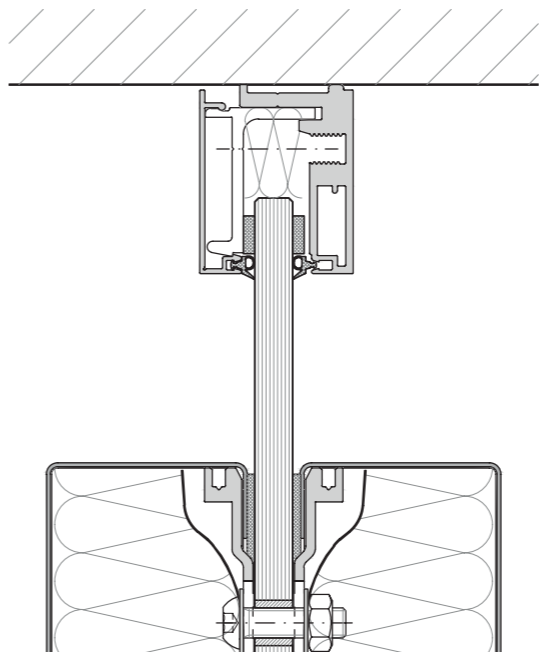
Door element aluminium framed door



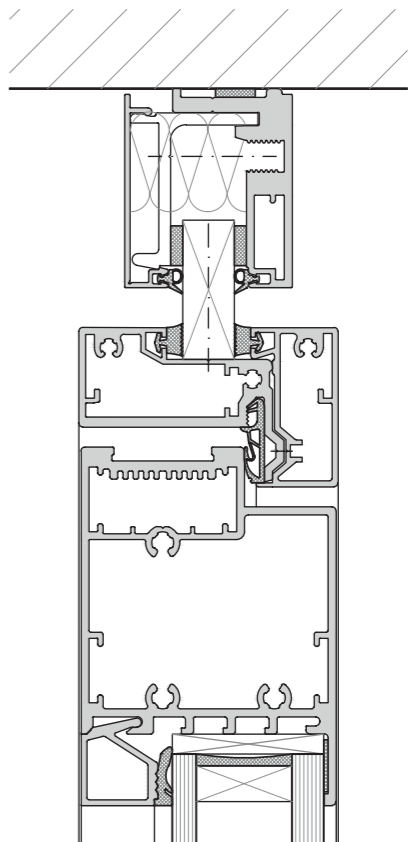
Sliding door fully-glazed ceiling connection



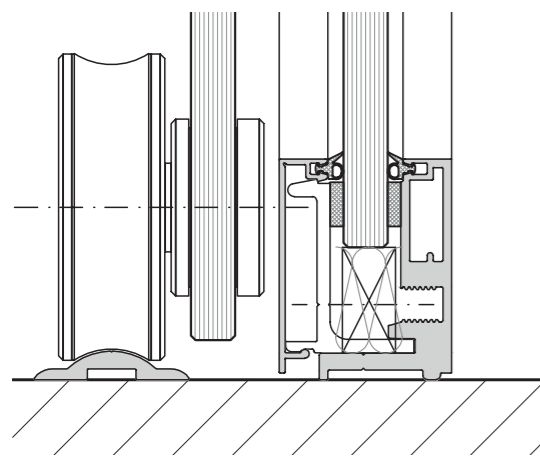
Aluminium framed door 40 mm ceiling connection



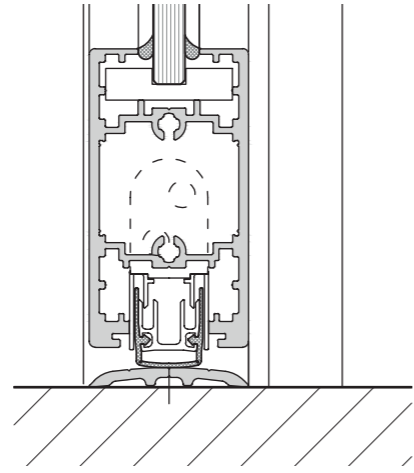
Absorber element ceiling connection



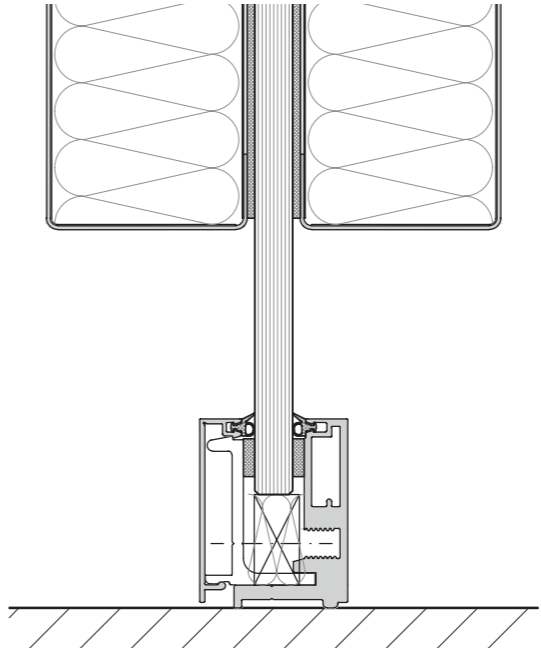
Aluminium framed door 64 mm ceiling connection



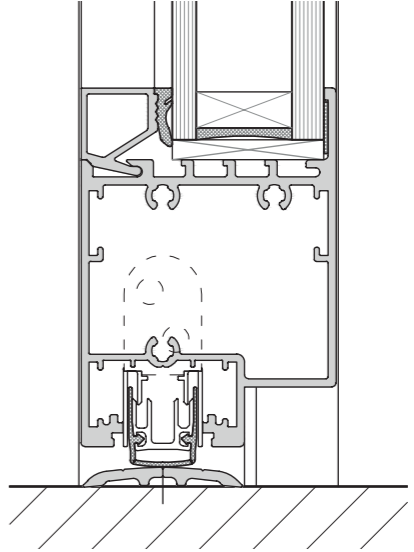
Sliding door floor connection



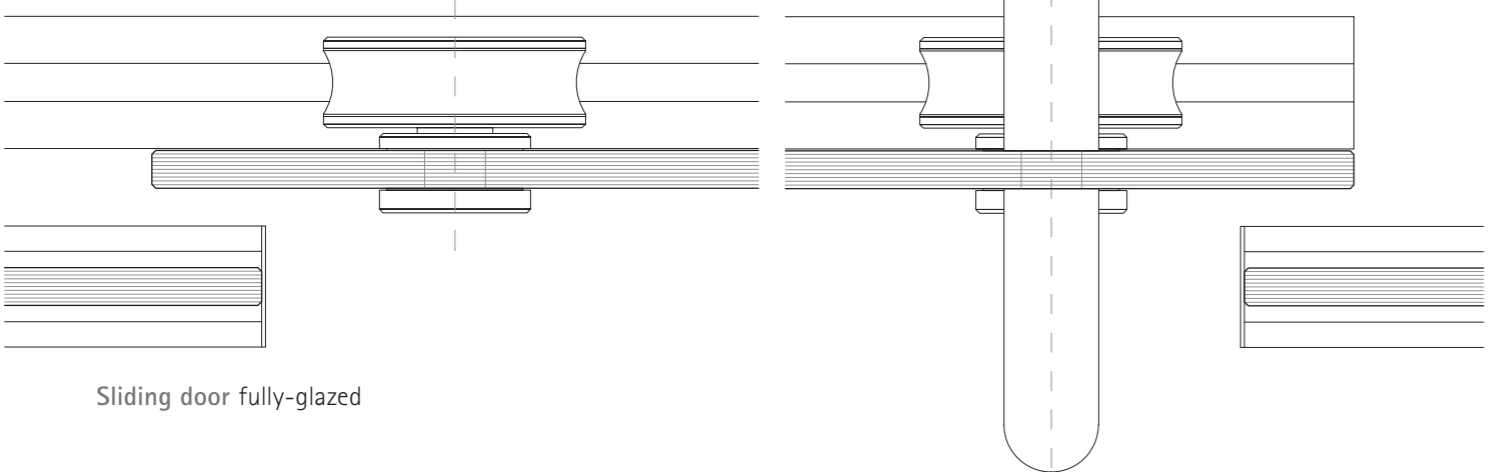
Aluminium framed door 40 mm floor connection



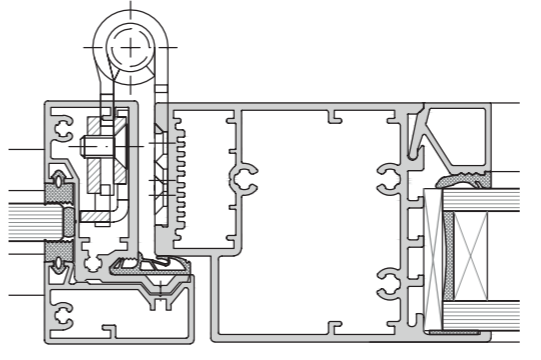
Absorber element floor connection



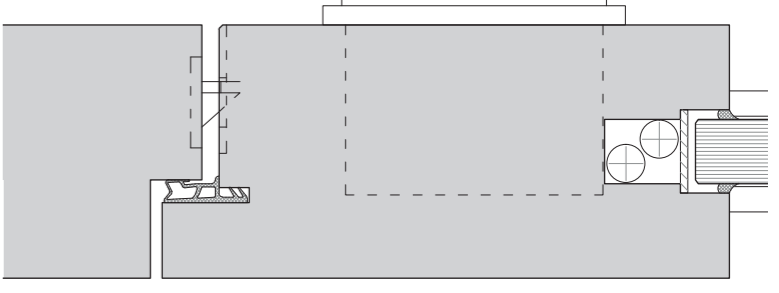
Aluminium framed door 64 mm floor connection



Sliding door fully-glazed



Door element aluminium framed door 64 mm



Door element Solid wall 64 mm

Partion wall	
Design	Variable single-glazed all-glass system without vertical posts for maximum transparency
Wall thickness	Standard design: 10, 12 mm toughened safety glass; 16 mm sound-insulating laminated glass
Grid	Dimensions freely selectable, in accordance with static approval, module widths between 400 mm and 1600 mm
Heights	Build height freely selectable, in accordance with static approval for the relevant use, max. build height 4000 mm
Deflection	profile: +/- 10 mm
Floor connection	50 mm
Ceiling connection	50 mm
Finishes	- Continuous glass front without visible frame - Aluminium profiles: anodised E6EV1, powder-coated based on RAL - Seals in light grey
Glazing	10, 12 mm toughened safety glass; 16 mm sound-insulating laminated glass
Glass joints	Silicon seals or adhesive strip seals
Installation	- Vertical and horizontal wiring in the wall system - Switches, plug sockets and control elements can be integrated into solid walls / door side panels
Accessories	
Acoustic absorbers	Highly absorbent and sound-insulating partition absorbers can be flush-fitted, either as metal absorbers, perforation as per the Strähle collection
Climate control elements	Strähle ÜS 60 air-flow elements for integration into door side panel or upper sections
Door elements	
Door frames	- Aluminium system frames with high-grade 3D hinges to support a variety of door types - Wooden block frame for 64 mm portal door - Standard-heights: 2115mm / 2435 mm
Door leaves	Solid doors: 41 and 64 mm Aluminium framed door: 40 and 64 mm Fully-glazed door: 10 mm toughened safety glass Wooden portal door: 64 mm in block frame design with 64 mm wooden door panel, single rebate
Sliding doors	- Floor and ceiling-guided versions possible - ST 40 sound-insulating sliding door
Fittings	Three-piece adjustable door hinges, stainless steel, door handles from collection
Fire prevention	Fire-rated version not possible

Wall element	Construction / Specification	Wall element Sound insulation in $R_{w,p}$
Fully-glazed	Toughened safty glass 10 mm	32 dB
	Toughened safty glass 12 mm	32 dB
	Acoustic laminated glass 12 mm*	36 dB
	Acoustic laminated glass 16 mm	40 dB
	Acoustic laminated glass 20 mm	41 dB **
	Acoustic laminated glass 24 mm	41 dB **

Door element	Construction / Specification	Door element Sound insulation in $R_{w,p}$	2-leaved version
Solid door	Solid door leaf 41 mm	32 dB	
	Sound insulation door leaf 41 mm	38 dB	
	Solid door leaf 64 mm	38 dB	x
Fully-glazed door	Fully-glazed door 10 mm with drop seal	32 dB	
Aluminium framed door	Aluminium framed door 40 mm 8 mm toughend safety glass 8mm acoustic laminated glass 12 mm acoustic laminated glass	32, 34, 37 dB	
	Aluminium framed door 64 mm - 38 mm double glazed	37 dB	x
Sliding door	Sound insulation sliding door	34 dB	

The tolerance for calculating the R_{wR} value according to DIN 4109 is -2 dB, and -5 dB in the case of door elements
The deduction figure for door elements between 2.5 and 3.0 m in height is approx. -2 dB

*Static certification only up to a height of 2970 mm.



Strähle Raum-Systeme GmbH

www.straehle.de

info@straehle.de

Gewerbestraße 6
71332 Waiblingen
T +49 7151 1714-0
F +49 7151 1714-320

Wurzelweg 5
14822 Borkheide
T +49 33845 66-0
F +49 33845 66-199

Austria
Industriestraße 9
2353 Guntramsdorf
T +43 2236 23232-0

Switzerland
Dellenbodenweg 1
4452 Itingen
T +41 61 463 1332
F +41 61 463 1333

UNITED KINGDOM PARTNER

Savile Row Projects Ltd
108-114 Golden Lane
EC1Y 0TG London
M +44 (0) 7813 652015